

# twine

2537.01 - 2537.08



collectie

wallcovering

05

textile

xorel

omschrijving

**semi-uni weefsel met licht horizontaal effect**

samenstelling

**100% xorel (60% PE, 40% biobased PE)**

breedte

**± 132 cm, ± 52 inches**

gewicht

**± 300 gr/m<sup>2</sup>, ± 13 oz/yd<sup>1</sup>**

brandwerendheid

**EN 13501, B s1 d2**

**ASTM E84, A**

aanvullende informatie

**cradle to cradle gold certified**

**Xorel is a registered trademark and license to distribute is granted by permission of Carnegie Fabrics Inc. US**



REACTION TO FIRE: EN 13501-1



**INDOOR AIR QUALITY**  
Indoor Advantage | Building Materials  
**GOLD**



# twine

2537.01 - 2537.08

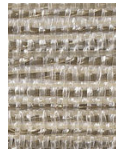
---



2537.03



2537.06



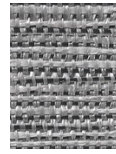
2537.01



2537.05



2537.07



2537.08



2537.04



2537.02