

linosa

2002.01 - 2002.09



collectie
wallcovering
04
textile

omschrijving
basis linnen weefsel

samenstelling
100% linnen

breedte
± 137 cm, ± 54 inches

gewicht
± 500 gr/m², ± 22 oz/yd¹

brandwerendheid
EN 13501, B s1 d0
ASTM E84, A

CE EN 15102:2007+A1:2011
 12
 1104/305-2011 (18-11-2015)
 wallcovering

REACTION TO FIRE: EN 13501-1



linosa

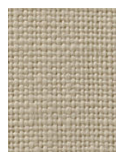
2002.01 - 2002.09



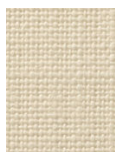
2002.06



2002.04



2002.03



2002.01



2002.05



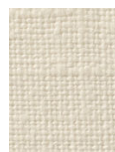
2002.02



2002.07



2002.08



2002.09