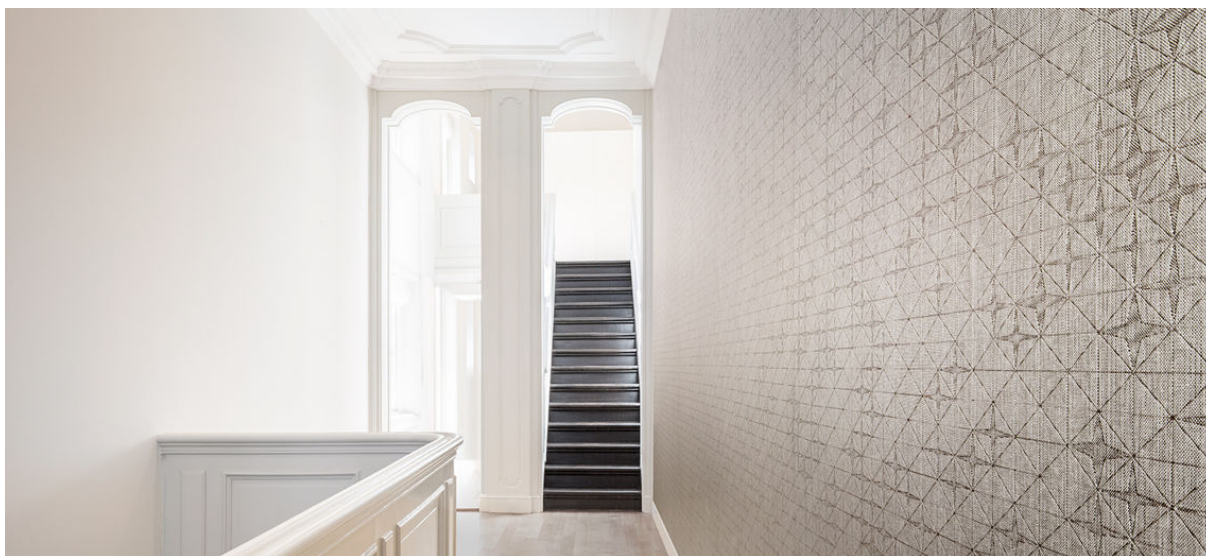


fragment emboss

2541.01 - 2541.09



collectie

wallcovering

05

textile

xorel

omschrijving

sterrenmotief geplaatst op een raster

samenstelling

100% xorel® (85% biobased polyethylene, 15% polyethylene) on x-protect wall™ (paper backing)

breedte

± 132 cm, ± 52 inches

gewicht

± 376 gr/m², ± 16 oz/yd¹

rapport

hoogte: 64.8 cm, 25.5 inches

breedte: 65.4 cm, 25.7 inches

brandwerendheid

EN 13501, B s1 d2

ASTM E84, A

aanvullende informatie

cradle to cradle gold certified

Xorel is a registered trademark and license to distribute is granted by permission of Carnegie Fabrics Inc. US



REACTION TO FIRE: EN 13501-1

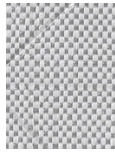


fragment emboss

2541.01 - 2541.09



2541.01



2541.03



2541.02



2541.04



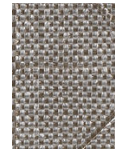
2541.05



2541.07



2541.06



2541.08



2541.09