

# kilby

1113.01 - 1113.33



collectie  
**wallcovering**  
**vinyl**

omschrijving  
**tweekleurige, richtingloze linnen**  
**weefstructuur met een matte uitstraling**

samenstelling  
**vinyl deklaag bedrukt met inkten op**  
**waterbasis, katoenen drager**

breedte  
**± 130 cm, ± 51 inches**

gewicht  
**± 350 gr/m<sup>2</sup>, ± 15 oz/yd<sup>1</sup>**

geluidsabsorptie  
**ISO 354**

alphaw 0.10

**ASTM C423**

nrc 0.10

brandwerendheid

**EN 13501, B s1 d0**

**IMO 2010 FTP part 2-5**

**ASTM E84, A**

**NFPA 286**

lichtechtheid

**ISO 105-B02**

8 (schaal 1-8)

**CCC-W-408D**

type II

waterdampdoorlaatbaarheid

**ISO 15106-3 / EN ISO 12572**

Sd waarde ± 9 m



**vinyl**   
COMMITTED TO  
SUSTAINABLE DEVELOPMENT

**CE** EN 15102



# kilby

1113.01 - 1113.33

---



1113.01



1113.02



1113.03



1113.04



1113.05



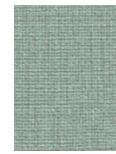
1113.06



1113.07



1113.08



1113.09



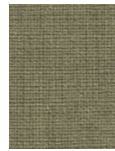
1113.10



1113.11



1113.12



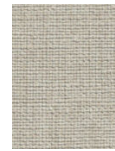
1113.13



1113.14



1113.15



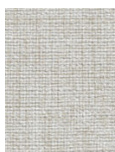
1113.16



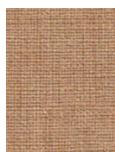
1113.17



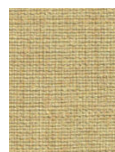
1113.18



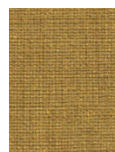
1113.19



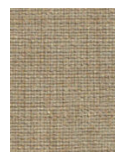
1113.20



1113.21



1113.22



1113.23



1113.24



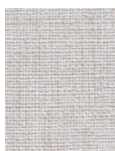
1113.25



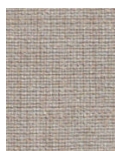
1113.26



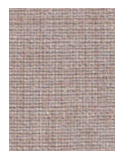
1113.27



1113.28



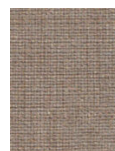
1113.29



1113.30



1113.31



1113.32



1113.33