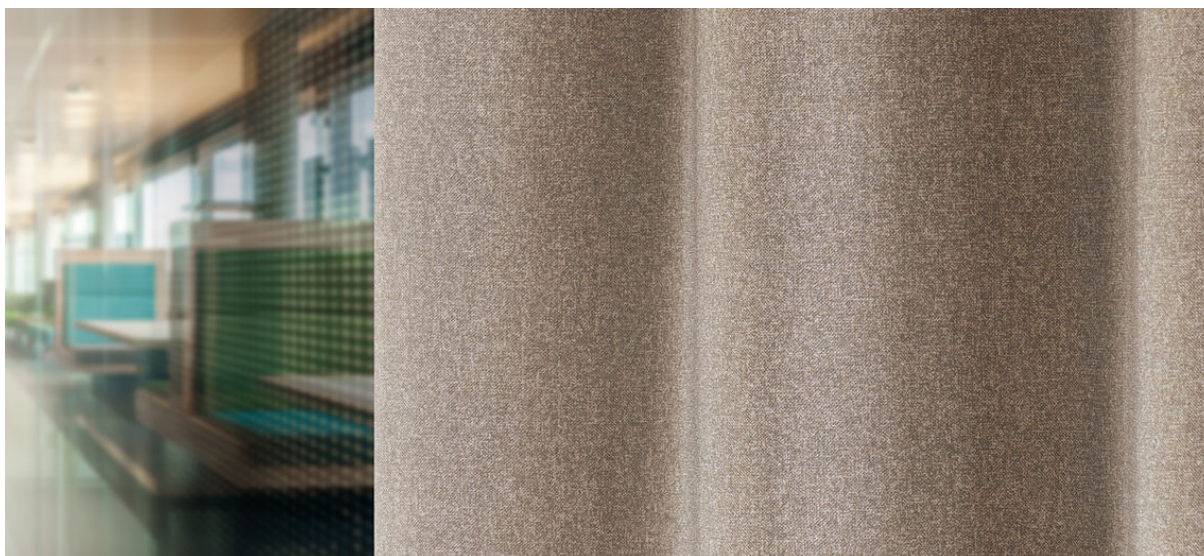


elba

8069.01 - 8069.20

black
out

binder

curtain 02

opis

**zaciemniająca tkanina zasłonowa
przypominająca strukturalny melanz**

skład

**100% flame retardant polyester acrylic
coating**

szerokość

± 277 cm, ± 109 inches

gramatura

± 1075 gr/m¹, ± 35 oz/yd¹ fabrics

komfort cieplny & wizualny

EN 14501

class 4 (skala 1-4)

AATCC 148

100% light blocked

odporność ogniowa

EN 13773, class 1**BS 5867-2, type B****DIN 4102, B1****UNI VF 8456-8457, classe 1****NFPA 701****CAN/ULC S109****IMO 2010 FTP part 7**

odporność na wycieranie

ISO 105-X12

mokre 4-5 / suche 4-5 (skala 1-5)

AATCC 8

nat 5 / droog 5 (skala 1-5)

odporność na działanie światła

ISO 105-B02

5 (skala 1-8)

AATCC 16.3: 60 hours

2.5 (skala 1-5)

wytrzymałość szwów

ASTM D434

warp 44 lbs / weft 49.5 lbs

codzienna dbałość o produkt

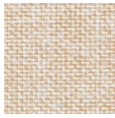
**kurczliwość: łańcuch -0.9% / wątek -0.6%****kurczliwość: łańcuch -1.5% / wątek -1.2%**



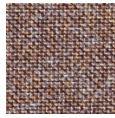
© Hochschule Niederrhein 2022

elba

8069.01 - 8069.20



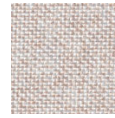
8069.01



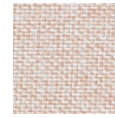
8069.02



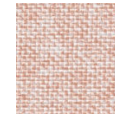
8069.03



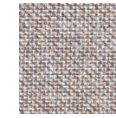
8069.04



8069.05



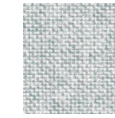
8069.06



8069.07



8069.08



8069.09



8069.10



8069.11



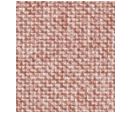
8069.12



8069.13



8069.14



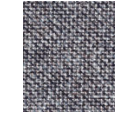
8069.15



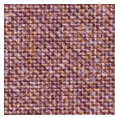
8069.16



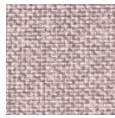
8069.17



8069.18



8069.19



8069.20