

# tula

8081.01 - 8081.16



kolekcja  
**curtain**

opis  
**subtelna struktura melanzu o wełnianym  
wyglądzie**

skład  
**60% recycled polyester FR / 40% polyester  
FR**

szerokość  
**± 149 cm, ± 59 inches**

gramatura  
**± 395 gr/m<sup>1</sup>, ± 13 oz/yd<sup>1</sup> fabrics**

współczynnik pochłaniania dźwięku  
**ISO 354**

alphaw 0.75 (pleated)

komfort wizualny & cieplny  
**EN 410/EN 14501**

odporność ogniowa  
**EN 13773, class 1**  
**BS 5867-2, type C**  
**NF P 92/503-507, M1**  
**DIN 4102, B1**  
**UNI VF 8456-8457, classe 1**  
**IMO 2010 FTP part 7**  
**NFPA 701**  
**CAN/ULC S109**

odporność na wycieranie  
**ISO 105-X12**  
mokre 4-5 / suche 4-5 (skala 1-5)

**AATCC 8**  
mokre 5 / suche 5 (skala 1-5)

odporność na działanie światła  
**ISO 105-B02**  
6 (skala 1-8)  
**AATCC 16.3: 60 hours**  
5 (skala 1-5)

wytrzymałość szwów  
**ISO 13936-2**  
warp 3 mm / weft 4.7 mm  
**ASTM D434**  
warp 49 lbs / weft 51 lbs

codzienna dbałość o produkt



**kurczliwość: alongamento: -2% / trama:  
-1.6%**



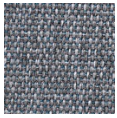
STANDARD  
100  
S07-0023  
Hohenstein HTTI



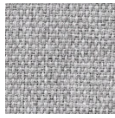
# tula

8081.01 - 8081.16

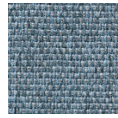
---



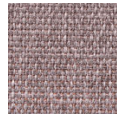
8081.01



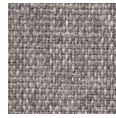
8081.02



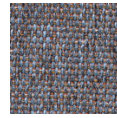
8081.03



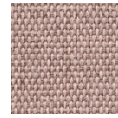
8081.04



8081.05



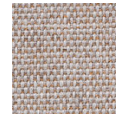
8081.06



8081.07



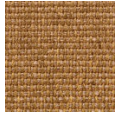
8081.08



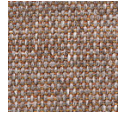
8081.09



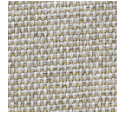
8081.10



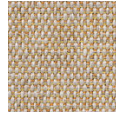
8081.11



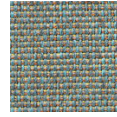
8081.12



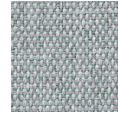
8081.13



8081.14



8081.15



8081.16