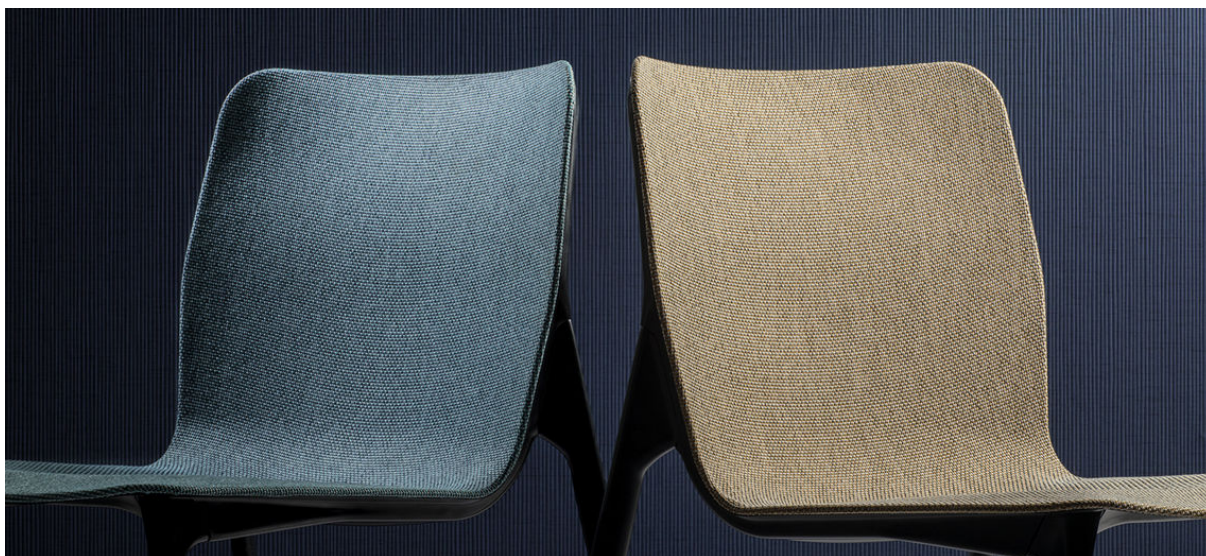


hestan

7035.01 - 7035.30



binder

upholstery 02

opis

gruba, półjednolita tkanina

skład

100% poliester ognioodporny

szerokość

± 140 cm, ± 55 inches

gramatura

± 570 gr/m¹, ± 18 oz/yd¹ fabrics

odporność ogniowa

EN 1021/ 1- 2

BS 5852, crib 5

NF P 92 / 503 - 507, M1

DIN 4102, B1

IMO 2010 FTP part 8

UNI 9175, classe 1

Cal TB 117

odporność na ścieranie

ISO 12947-2

60.000 rubs martindale

ASTM D4157

100.000 double rubs wyzenbeek

odporność na wyrywanie włókien

ISO 12945-2

4-5 (skala 1- 5)

ASTM D3511

4-5 (skala 1- 5)

odporność na wycieranie

ISO 105-X12

mokre 4-5 / suche 4-5 (skala 1-5)

AATCC 8

mokre 5 / suche 5 (skala 1-5)

odporność na działanie światła

ISO 105-B02

6 (skala 1-8)

AATCC 16.3: 40 hours

5 (skala 1-8)

wytrzymałość szwów

ISO 13936 - 2

lizo 2.7 mm / trama 2.7 mm

ASTM D4034

lizo 83 lbf / trama 91 lbf

codzienna dbałość o produkt



kurczliwość: łańcuch -1.5% / wątek -1.5%



kurczliwość: łańcuch -2.9% / wątek -3.0%

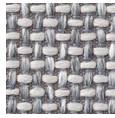


hestan

7035.01 - 7035.30



7035.01



7035.02



7035.03



7035.04



7035.05



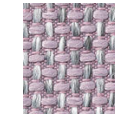
7035.06



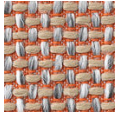
7035.07



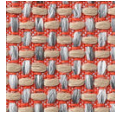
7035.08



7035.09



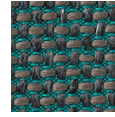
7035.10



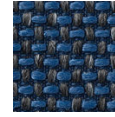
7035.11



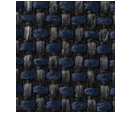
7035.12



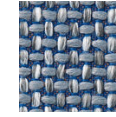
7035.13



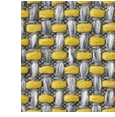
7035.14



7035.15



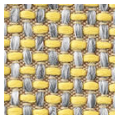
7035.16



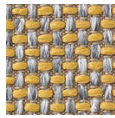
7035.17



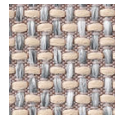
7035.18



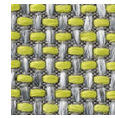
7035.19



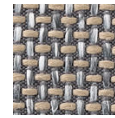
7035.20



7035.21



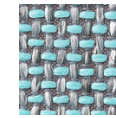
7035.22



7035.23



7035.24



7035.25



7035.26



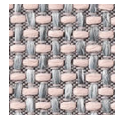
7035.27



7035.28



7035.29



7035.30