

# lani

7060.01 - 7060.56



binder

**upholstery 02**

opis

**solidna tkanina z wełny filcowanej, w nowoczesnych, odpowiednio dobranych kolorach**

skład

**80% wełna / 20% poliamid**

szerokość

**± 140 cm, ± 55 inches**

gramatura

**± 640 gr/m<sup>1</sup>, ± 21 oz/yd<sup>1</sup> fabrics**

odporność ogniowa

**EN 1021/ 1-2**

**BS 5852, crib 5 with FR finish**

**DIN 4102, B2 with FR finish**

**UNI VF 9175, classe 1 IM**

**Cal TB 117**

**NFPA 260, class 1**

**IMO 2010 FTP part 8**

**NF D 60-013 - AM18**

odporność na ścieranie

**ISO 12947-2**

>300.000 rubs martindale

**ASTM D4157**

100.000 double rubs wyzenbeek

odporność na wyrywanie włókien

**ISO 12945-2**

4 (skala 1-5)

**ASTM D3511**

1 (skala 1-5)

odporność na wycieranie

**ISO 105-X12**

weł 4 - 5 / dry 4 - 5 (skala 1-5)

**AATCC 8**

weł 5 / dry 5 (skala 1-5)

odporność na działanie światła

**ISO 105-B02**

5-7 (escala 1-8)

**AATCC 16.3: 40 hours**

3.5 (escala 1-5)

wytrzymałość szwów

**ISO 13936 - 2**

łańcuch 2.6 mm / wątek 3 mm

**ASTM D4034**

łańcuch 125 lbs / wątek 116 lbs

odporność na tarcie

**ASTM D5034**

warp 206 lbs / weft 202 lbs

codzienna dbałość o produkt





# lani

7060.01 - 7060.56

---



7060.01



7060.02



7060.03



7060.04



7060.05



7060.06



7060.07



7060.08



7060.09



7060.10



7060.11



7060.12



7060.13



7060.14



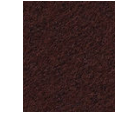
7060.15



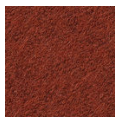
7060.16



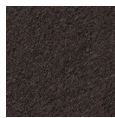
7060.17



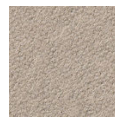
7060.18



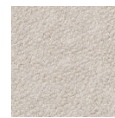
7060.19



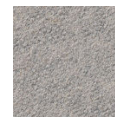
7060.20



7060.21



7060.22



7060.23



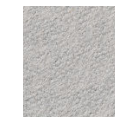
7060.24



7060.25



7060.26



7060.27



7060.28



7060.29



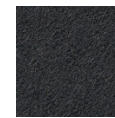
7060.30



7060.31



7060.32



7060.33



7060.34



7060.35



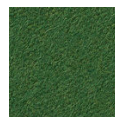
7060.36



7060.37



7060.38



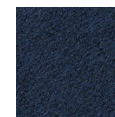
7060.39



7060.40



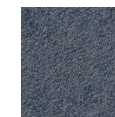
7060.41



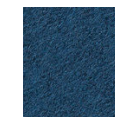
7060.42



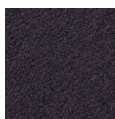
7060.43



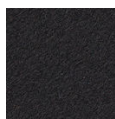
7060.44



7060.45



7060.46



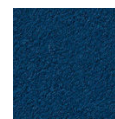
7060.47



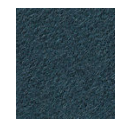
7060.48



7060.49



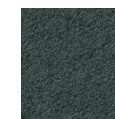
7060.50



7060.51



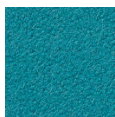
7060.52



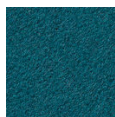
7060.53



7060.54



7060.55



7060.56