

creek

7053.01 - 7053.22



kolekcja

upholstery

vinyl

opis

trójkolorowy, nieregularny wygląd lnu

skład

spieniony winyl, na podkładzie bawełniano-poliestrowym o splocie dzianinowym

szerokość

± 137-140 cm, ± 54-55 inches

gramatura

backing: ± 110 gr/m², ± 5 oz/yd¹

coating: ± 690 gr/m², ± 31 oz/yd¹

grubość

1.1 mm, 0.04 inches

odporność ogniowa

EN 1021/1-2

BS 5852, crib 5

NF P 92/503 - 507, M2

NF D60-013 (AM 18)

DIN 4102, B2

UNI 9175, classe 1 IM

Cal TB 117

NFPA 260, class 1

IMO 2010 FTP part 8

odporność na ścieranie

ISO 12947-2

> 300.000 rubs martindale

ASTM D4157

100.000 double rubs wyzenbeek

odporność na wycieranie

ISO 105-X12

wet 5 / dry 5 (scale 1-5)

AATCC 8

wet 5 / dry 5 (scale 1-5)

odporność na działanie światła

ISO 105-B02

7 (scale 1-8)

ASTM D4329: 150 hours

4 (scale 1-5)

odporność na krew, urynę, pot i tłuszcz ludzki

EN 12720

5 (scale 1-5)

odporność na tarcie

ISO 1421

length 470 N / width 313 N

ASTM D2261

length 7.3 lbs / width 9.2 lbs

odporność na deformację

ISO 7854

400.000 cycles

spoistość

ASTM D751

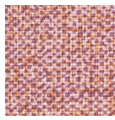
length 8.3 lbf / width 5.2 lbf



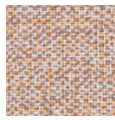
vinyl 
COMMITTED TO
SUSTAINABLE DEVELOPMENT

creek

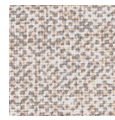
7053.01 - 7053.22



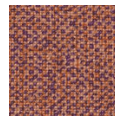
7053.01



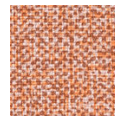
7053.02



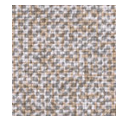
7053.03



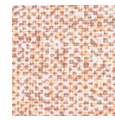
7053.04



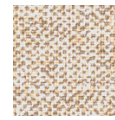
7053.05



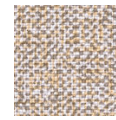
7053.06



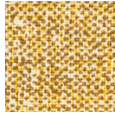
7053.07



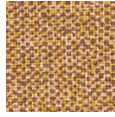
7053.08



7053.09



7053.10



7053.11



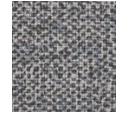
7053.12



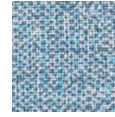
7053.13



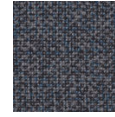
7053.14



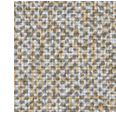
7053.15



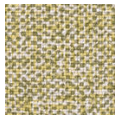
7053.16



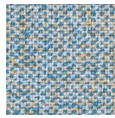
7053.17



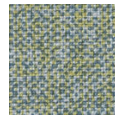
7053.18



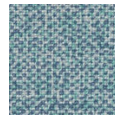
7053.19



7053.20



7053.21



7053.22