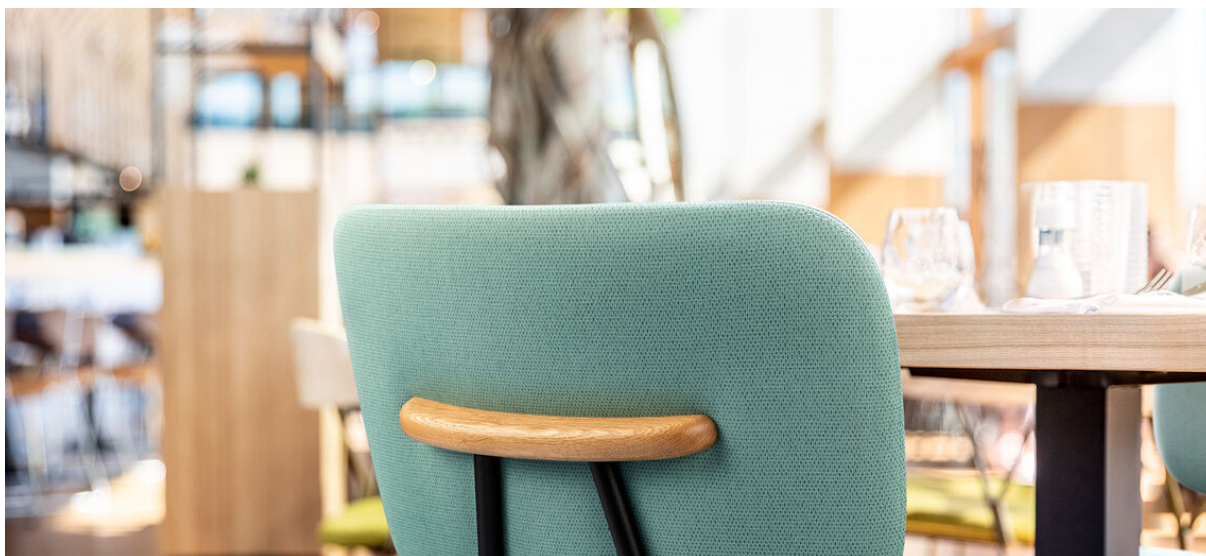


# arrow

7055.01 - 7055.23



kolekcja

**upholstery**

**vinyl**

opis

**dwukolorowa, tkana struktura w  
świeżych, jasnych kolorach**

skład

**spieniony winyl, na podkładzie  
bawełniano-poliestrowym o splocie  
dzianinowym**

szerokość

**± 137-140 cm, ± 54-55 inches**

gramatura

**backing: ± 110 gr/m<sup>2</sup>, ± 5 oz/yd<sup>1</sup>  
coating: ± 690 gr/m<sup>2</sup>, ± 31 oz/yd<sup>1</sup>**

grubość

**1.1 mm, 0.04 inches**

odporność ogniowa

**EN 1021/1-2**

**BS 5852, crib 5**

**NF P 92/503 - 507, M2**

**NF D60-013 (AM 18)**

**DIN 4102, B2**

**UNI 9175, classe 1 IM**

**Cal TB 117**

**NFPA 260, class 1**

**IMO 2010 FTP part 8**

odporność na ścieranie

**ISO 12947-2**

> 300.000 rubs martindale

**ASTM D4157**

100.000 double rubs wyzenbeek

odporność na wycieranie

**ISO 105-X12**

wet 5 / dry 5 (scale 1-5)

**AATCC 8**

wet 5 / dry 5 (scale 1-5)

odporność na działanie światła

**ISO 105-B02**

7 (scale 1-8)

**ASTM D4329: 150 hours**

4 (scale 1-5)

odporność na krew, urynę, pot i tłuszcz ludzki

**EN 12720**

5 (scale 1-5)

odporność na tarcie

**ISO 1421**

length 470 N / width 313 N

**ASTM D2261**

length 7.3 lbs / width 9.2 lbs

odporność na deformację

**ISO 7854**

400.000 cycles

spistość

**ASTM D751**

length 8.3 lbf / width 5.2 lbf

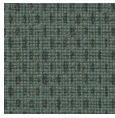


**vinyl**   
COMMITTED TO  
SUSTAINABLE DEVELOPMENT

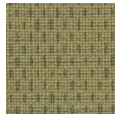
# arrow

7055.01 - 7055.23

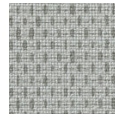
---



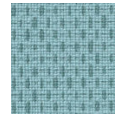
7055.01



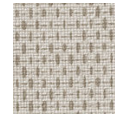
7055.02



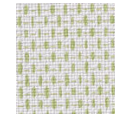
7055.03



7055.04



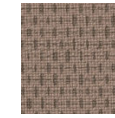
7055.05



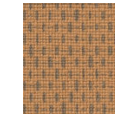
7055.06



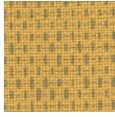
7055.07



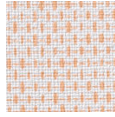
7055.08



7055.09



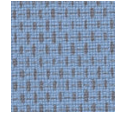
7055.10



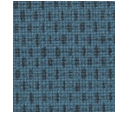
7055.11



7055.12



7055.13



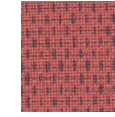
7055.14



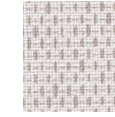
7055.15



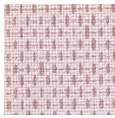
7055.16



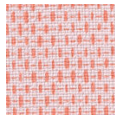
7055.17



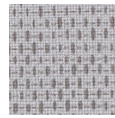
7055.18



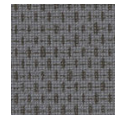
7055.19



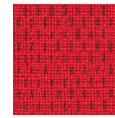
7055.20



7055.21



7055.22



7055.23