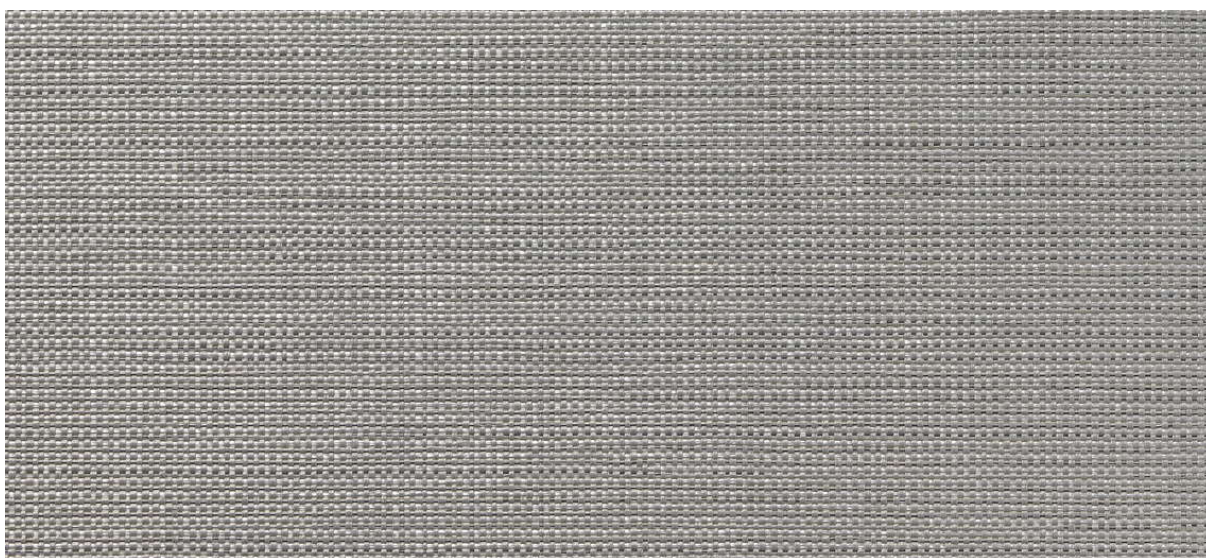


# dash

2533.01 - 2533.18



kolekcji

wallcovering

05

textile

xorel

opis

**półjednorodna wielokolorowa tkanina  
pleciona**

skład

**100% xorel (65% biobased PE, 35% PE)**

szerokość

**± 132 cm, ± 52 inches**

gramatura

**± 360 gr/m<sup>2</sup>, ± 15 oz/yd<sup>1</sup>**

odporność ogniowa

**EN 13501, B s1 d2**

**ASTM E84, A**

dotatkowe informacje

**cradle to cradle gold certified**

**Xorel is a registered trademark and license  
to distribute is granted by permission of  
Carnegie Fabrics Inc. US**



REACTION TO FIRE: EN 13501-1



# dash

2533.01 - 2533.18

---



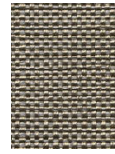
2533.02



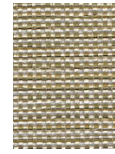
2533.03



2533.01



2533.17



2533.07



2533.10



2533.11



2533.09



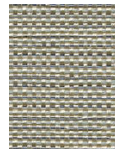
2533.15



2533.06



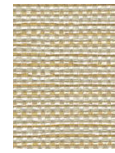
2533.14



2533.04



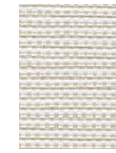
2533.16



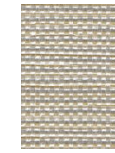
2533.13



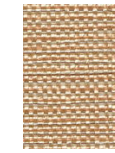
2533.12



2533.08



2533.05



2533.18