

saria

2008.01 - 2008.20



kolekcji
wallcovering
04
textile

opis
efekt splotu poziomego w dwóch kolorach

skład
100% jedwabiu na nośniku papierowym

szerokość
± 130 cm, ± 51 inches

gramatura
± 235 gr/m², ± 10 oz/yd¹

odporność ogniowa
EN 13501, B s1 d0

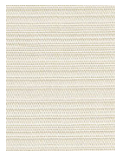


saria

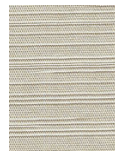
2008.01 - 2008.20



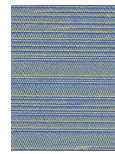
2008.03



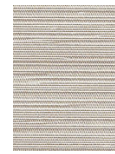
2008.02



2008.01



2008.10



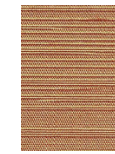
2008.13



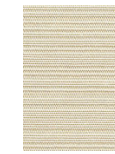
2008.14



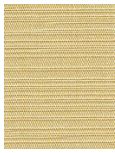
2008.11



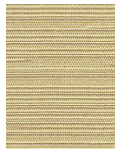
2008.18



2008.09



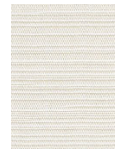
2008.06



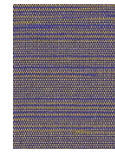
2008.04



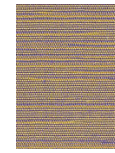
2008.08



2008.12



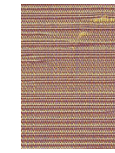
2008.16



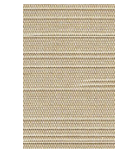
2008.15



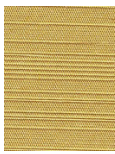
2008.20



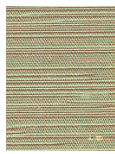
2008.19



2008.17



2008.05



2008.07