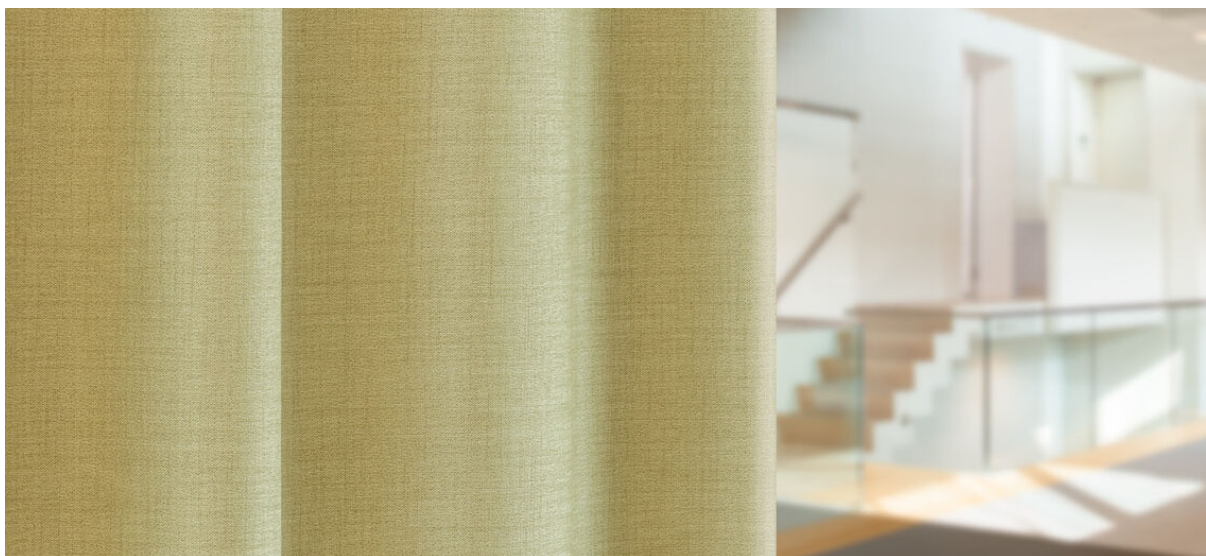


rani

8067.01 - 8067.22



coleção
curtain

descrição
tecido para cortina com aspecto de linho estruturado, dim out

composição
100% poliéster resistente ao fogo

largura
± 294 cm, ± 116 inches

gramagem
± 861 gr/m¹, ± 28 oz/yd¹ fabrics

conforto visual & térmico
**EN 410/EN 14501
AATCC 148**

resistência ao fogo
**EN 13773, class 1
BS 5867-2, type C
NF P 92/503-507, M1
DIN 4102, B1
UNI VF 8456-8457, classe 1
NFPA 701
CAN/ULC S109
IMO 2010 FTP part 7**

resistência à fricção
ISO 105-X12
molhado 4-5 / seco 4-5 (escala 1-5)
AATCC 8
molhado 5 / seco 5 (escala 1-5)

resistência à luz
ISO 105-B02
5 (scale 1 - 8)
AATCC 16.3: 60 hours
2.5 (escala 1-5)

resistência ao deslizamento das costuras
ASTM D434
warp 53.5 lbs / weft 48 lbs

manutenção



encolhimento: alongamento -0.8% / trama -0.4%



encolhimento: alongamento -1.6% / trama -0.7%

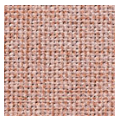


STANDARD
100
S07-0023
Hohenstein HTTI

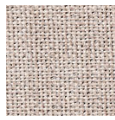


rani

8067.01 - 8067.22



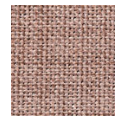
8067.01



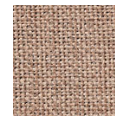
8067.02



8067.03



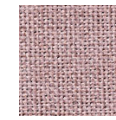
8067.04



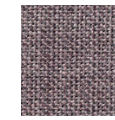
8067.05



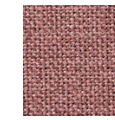
8067.06



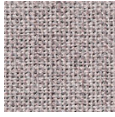
8067.07



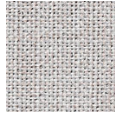
8067.08



8067.09



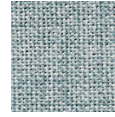
8067.10



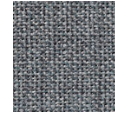
8067.11



8067.12



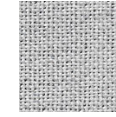
8067.13



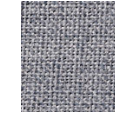
8067.14



8067.15



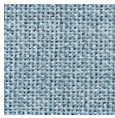
8067.16



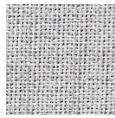
8067.17



8067.18



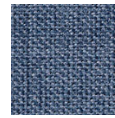
8067.19



8067.20



8067.21



8067.22