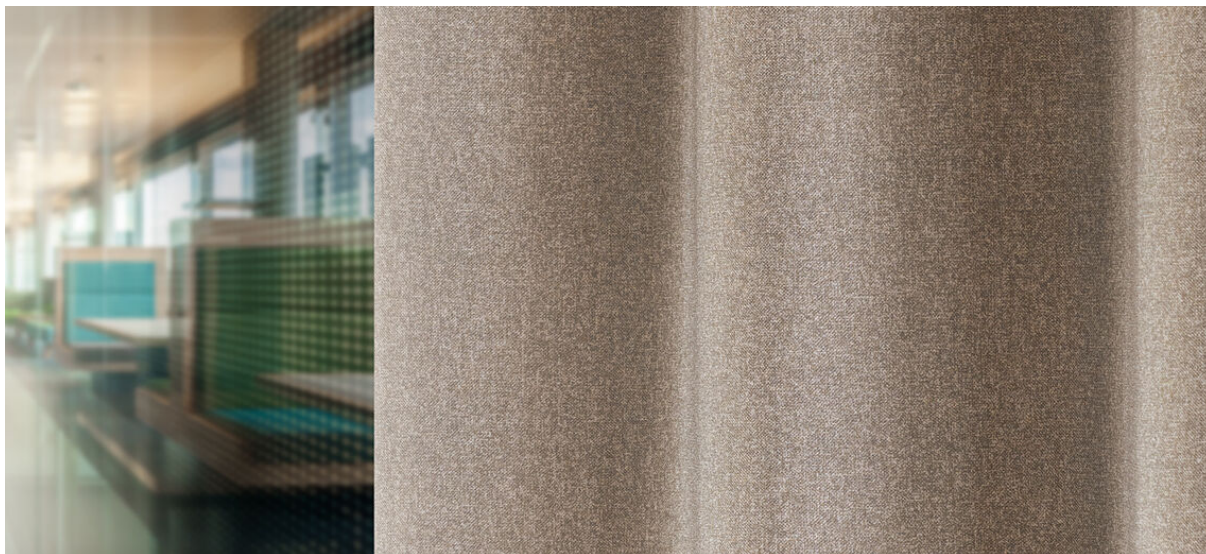


# elba

8069.01 - 8069.20



binder

**curtain 02**

descrição

**tecido para cortina com aspecto melange estruturado, preto**

composição

**100% flame retardant polyester acrylic coating**

largura

**± 277 cm, ± 109 inches**

gramagem

**± 1075 gr/m<sup>1</sup>, ± 35 oz/yd<sup>1</sup> fabrics**

conforto visual & térmico

**EN 410/EN 14501**

**AATCC 148**

resistência ao fogo

**EN 13773, class 1**

**BS 5867-2, type B**

**DIN 4102, B1**

**UNI VF 8456-8457, classe 1**

**NFPA 701**

**CAN/ULC S109**

**IMO 2010 FTP part 7**

resistência à fricção

**ISO 105-X12**

molhado 4-5 / seco 4-5 (escala 1-5)

**AATCC 8**

nat 5 / droog 5 (escala 1-5)

resistência à luz

**ISO 105-B02**

5-6 (escala 1-8)

**AATCC 16.3: 60 hours**

5 (escala 1-5)

resistência ao deslizamento das costuras

**ASTM D434**

warp 44 lbs / weft 49.5 lbs

manutenção



**encolhimento: alongamento -0.9% / trama -0.6%**



**encolhimento: alongamento -1.5% / trama -1.2%**

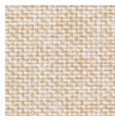


Hochschule Rhein-Waal  
University of Applied Sciences

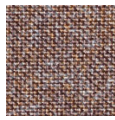
# elba

8069.01 - 8069.20

---



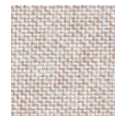
8069.01



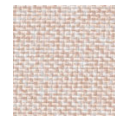
8069.02



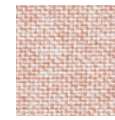
8069.03



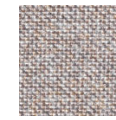
8069.04



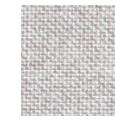
8069.05



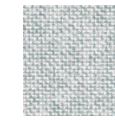
8069.06



8069.07



8069.08



8069.09



8069.10



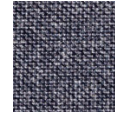
8069.11



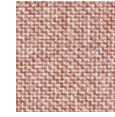
8069.12



8069.13



8069.14



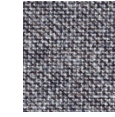
8069.15



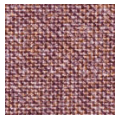
8069.16



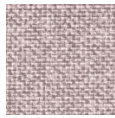
8069.17



8069.18



8069.19



8069.20