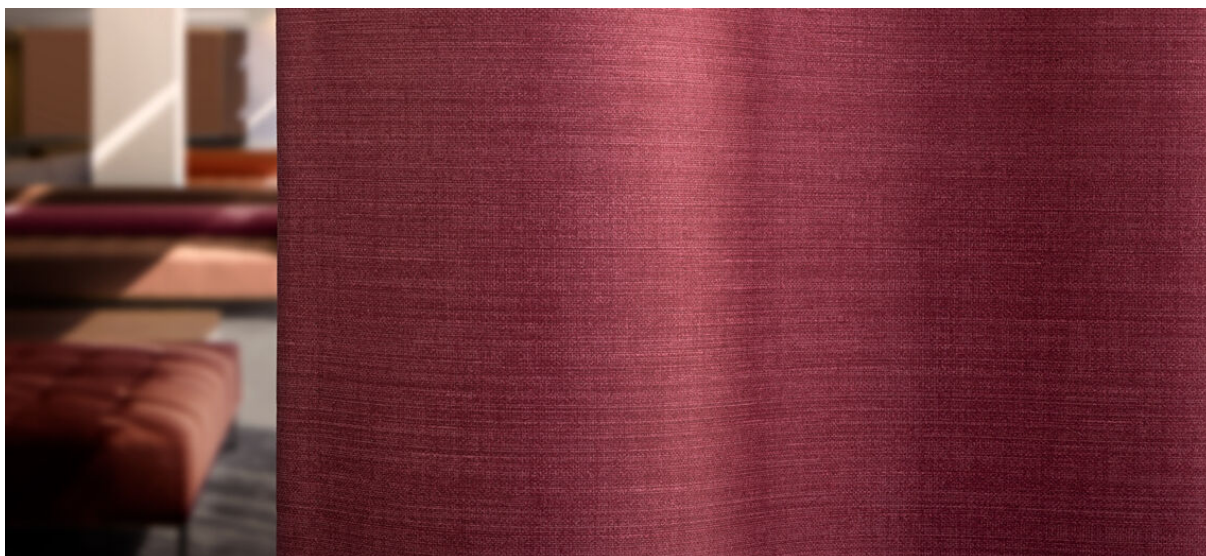


sotra

8070.01 - 8070.24



binder

curtain 02

descrição

tecido para cortina com aspecto de seda natural, black-out

composição

100% flame retardant polyester acrylic coating

largura

± 283 cm, ± 111 inches

gramagem

± 778 gr/m¹, ± 25 oz/yd¹ fabrics

conforto visual & térmico

EN 410/EN 14501

AATCC 148

resistência ao fogo

EN 13773, class 1

BS 5867-2, type B

DIN 4102, B1

UNI VF 8456-8457, classe 1

NFPA 701

CAN/ULC S109

IMO 2010 FTP part 7

resistência à fricção

ISO 105-X12

molhado 4-5 / seco 4-5 (escala 1-5)

AATCC 8

molhado 5 / seco 5 (escala 1-5)

resistência à luz

ISO 105-B02

5 (escala 1-8)

AATCC 16.3: 60 hours

4.5 (escala 1-5)

resistência ao deslizamento das costuras

ASTM D434

warp 48 lbs / weft 53 lbs

manutenção



encolhimento: alongamento -1% / trama

-0.5%



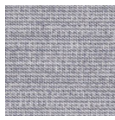
encolhimento: alongamento -1.2% / trama

-0.4%

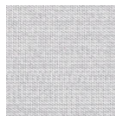


sotra

8070.01 - 8070.24



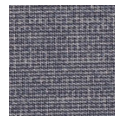
8070.01



8070.02



8070.03



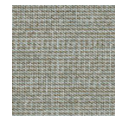
8070.04



8070.05



8070.06



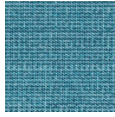
8070.07



8070.08



8070.09



8070.10



8070.11



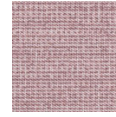
8070.12



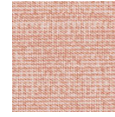
8070.13



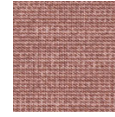
8070.14



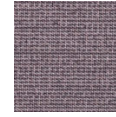
8070.15



8070.16



8070.17



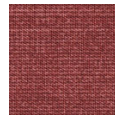
8070.18



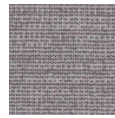
8070.19



8070.20



8070.21



8070.22



8070.23



8070.24