

tula

8081.01 - 8081.16



binder

curtain 01

descrição

estrutura de "melange" subtilmente colorida com uma aparência lanosa e seca

composição

100% poliéster resistente ao fogo

largura

± 149 cm, ± 59 inches

gramagem

± 395 gr/m¹, ± 13 oz/yd¹ fabrics

conforto visual & térmico

EN 410/EN 14501

resistência ao fogo

EN 13773, class 1

BS 5867-2, type C

NF P 92/503-507, M1

DIN 4102, B1

UNI VF 8456-8457, classe 1

IMO 2010 FTP part 7

NFPA 701

CAN/ULC S109

resistência à fricção

ISO 105-X12

molhado 4-5 / seco 4-5 (escala 1-5)

AATCC 8

molhado 5 / seco 5 (escala 1-5)

resistência à luz

ISO 105-B02

6 (escala 1-8)

AATCC 16.3: 60 hours

5 (escala 1-5)

resistência ao deslizamento das costuras

ISO 13936-2

warp 3 mm / weft 4.7 mm

ASTM D434

warp 49 lbs / weft 51 lbs

manutenção



encolhimento: alongamento: -2% / trama: -1.6%

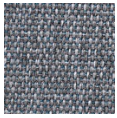


**CONFIDENCE
IN TEXTILES**
Tested for harmful substances
according to Oeko-Tex® Standard 100

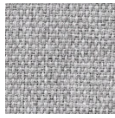


tula

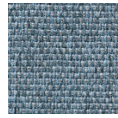
8081.01 - 8081.16



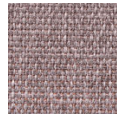
8081.01



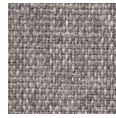
8081.02



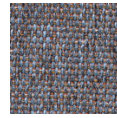
8081.03



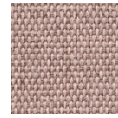
8081.04



8081.05



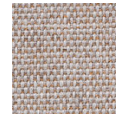
8081.06



8081.07



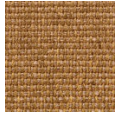
8081.08



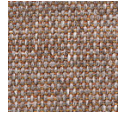
8081.09



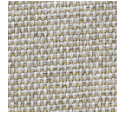
8081.10



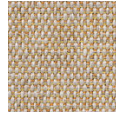
8081.11



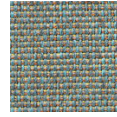
8081.12



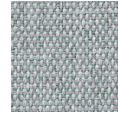
8081.13



8081.14



8081.15



8081.16