

malta

7037.01 - 7037.21



coleção

**upholstery
vinyl**

descrição

manchas claras sobre base escura

composição

espuma vinílica, base de malha de algodão/poliéster

largura

± 137-140 cm, ± 54-55 inches

gramagem

**backing: ± 110 gr/m², ± 5 oz/yd¹
coating: ± 690 gr/m², ± 31 oz/yd¹**

espessura

1.1 mm, 0.04 inches

resistência ao fogo

EN 1021/1-2

BS 5852, crib 5

NF P 92/503 - 507, M2

NF D60-013 (AM 18)

DIN 4102, B2

UNI 9175, classe 1 IM

Cal TB 117

NFPA 260, class 1

IMO 2010 FTP part 8

desgaste à abrasão

ISO 12947-2

> 300.000 rubs martindale

ASTM D4157

100.000 double rubs wyzenbeek

resistência à fricção

ISO 105-X12

wet 5 / dry 5 (scale 1-5)

AATCC 8

wet 5 / dry 5 (scale 1-5)

resistência à luz

ISO 105-B02

7 (scale 1-8)

ASTM D4329: 150 hours

4 (scale 1-5)

resistência ao sangue, urina, suor e gordura da pele

EN 12720

5 (scale 1-5)

resistência à tensão

ISO 1421

length 470 N / width 313 N

ASTM D2261

length 7.3 lbs / width 9.2 lbs

flexíveis

ISO 7854

400.000 cycles

aderência ao revestimento

ASTM D751

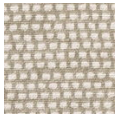
length 8.3 lbf / width 5.2 lbf



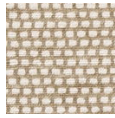
vinyl 
COMMITTED TO
SUSTAINABLE DEVELOPMENT

malta

7037.01 - 7037.21



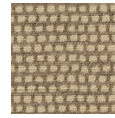
7037.01



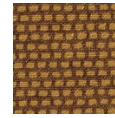
7037.02



7037.03



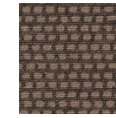
7037.04



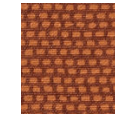
7037.05



7037.06



7037.07



7037.08



7037.09



7037.10



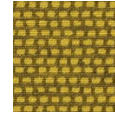
7037.11



7037.12



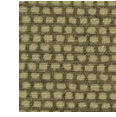
7037.13



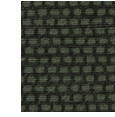
7037.14



7037.15



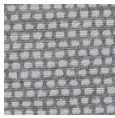
7037.16



7037.17



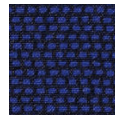
7037.18



7037.19



7037.20



7037.21