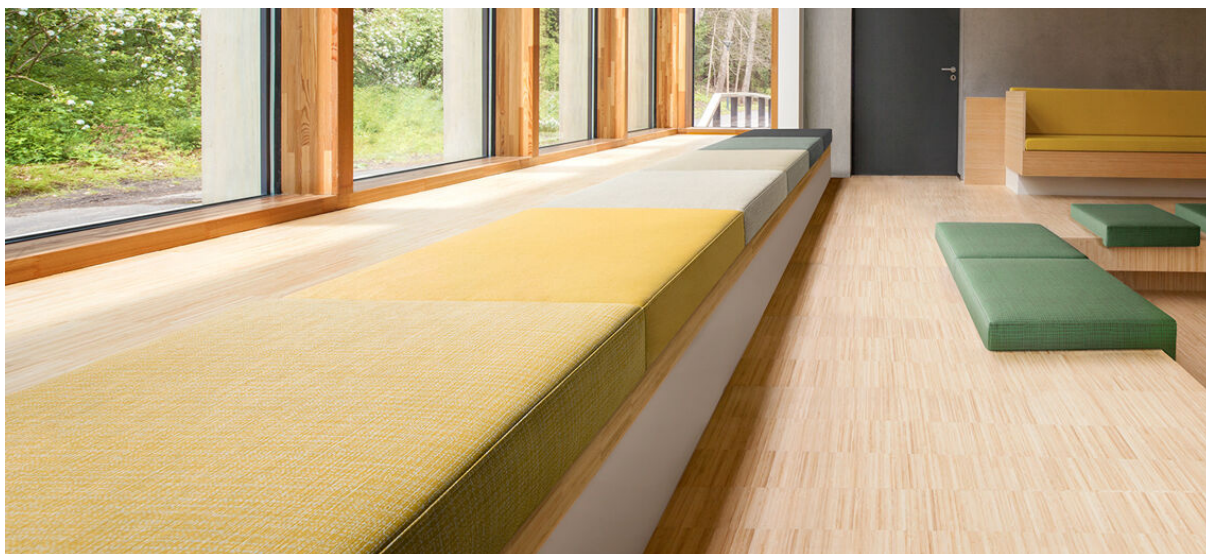


# scott

7045.01 - 7045.18



binder

upholstery

03

vinyl

descrição

**imagem global formada por pequenas linhas horizontais e verticais**

composição

**espuma vinílica, base de malha de algodão/poliéster**

largura

**± 137-140 cm, ± 54-55 inches**

gramagem

**backing: ± 110 gr/m<sup>2</sup>, ± 5 oz/yd<sup>1</sup>**

**coating: ± 690 gr/m<sup>2</sup>, ± 31 oz/yd<sup>1</sup>**

espessura

**1.1 mm, 0.04 inches**

resistência ao fogo

**EN 1021/1-2**

**BS 5852, crib 5**

**NF P 92/503 - 507, M2**

**NF D60-013 (AM 18)**

**DIN 4102, B2**

**UNI 9175, classe 1 IM**

**Cal TB 117**

**NFPA 260, class 1**

**IMO 2010 FTP part 8**

desgaste à abrasão

**ISO 12947-2**

> 300.000 rubs martindale

**ASTM D4157**

100.000 double rubs wyzenbeek

resistência à fricção

**ISO 105-X12**

wet 5 / dry 5 (scale 1-5)

**AATCC 8**

wet 5 / dry 5 (scale 1-5)

resistência à luz

**ISO 105-B02**

7 (scale 1-8)

**ASTM D4329: 150 hours**

4 (scale 1-5)

resistência ao sangue, urina, suor e gordura da pele

**EN 12720**

5 (scale 1-5)

resistência à tensão

**ISO 1421**

length 470 N / width 313 N

**ASTM D2261**

length 7.3 lbs / width 9.2 lbs

flexíveis

**ISO 7854**

400.000 cycles

aderência ao revestimento

**ASTM D751**

length 8.3 lbf / width 5.2 lbf

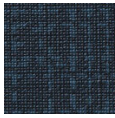


**vinyl**   
COMMITTED TO  
SUSTAINABLE DEVELOPMENT

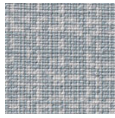
# scott

7045.01 - 7045.18

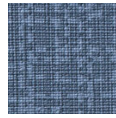
---



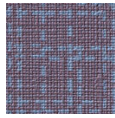
7045.01



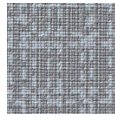
7045.02



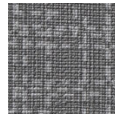
7045.03



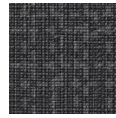
7045.04



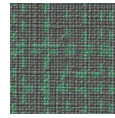
7045.05



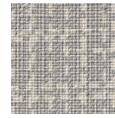
7045.06



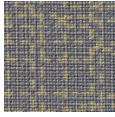
7045.07



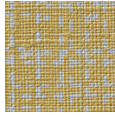
7045.08



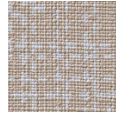
7045.09



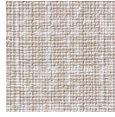
7045.10



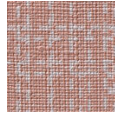
7045.11



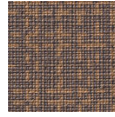
7045.12



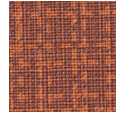
7045.13



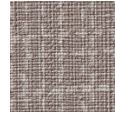
7045.14



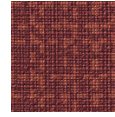
7045.15



7045.16



7045.17



7045.18