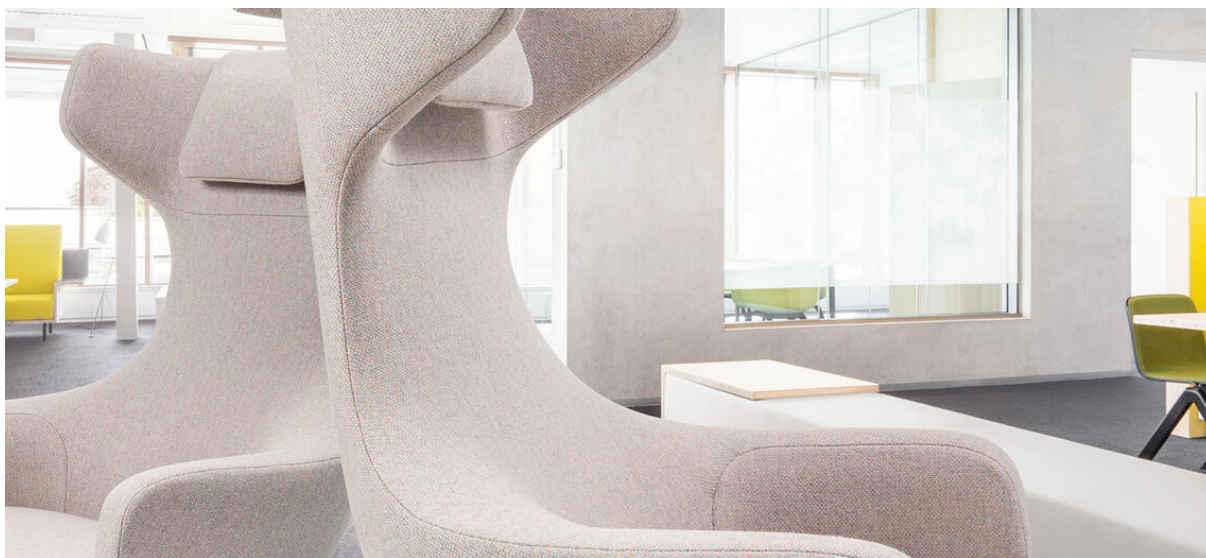


lamu

7051.01 - 7051.30



coleção

**upholstery
textile**

descrição

qualidade de lã feltrada estruturada

composição

**75% post-consumer recycled lã / 25%
poliéster**

largura

± 150 cm, ± 59 inches

gramagem

± 660 gr/m¹, ± 21 oz/yd¹ fabrics

resistência ao fogo

EN 1021/1-2

BS 5852, crib 5

NF P 92/503-507, M2

DIN 4102, B2

IMO 2010 FTP part 8

UNI 9175, classe 1 IM

Cal TB 117

NFPA 260, class 1

desgaste à abrasão

ISO 12947-2

>100.000 rubs martindale

ASTM D4157

>30.000 double rubs wyzenbeek

pilling

ISO 12945-2

4 (escala 1-5)

ASTM D3511

3 (escala 1-5)

resistência à fricção

ISO 105-X12

molhado 5 / seco 5 (escala 1-5)

AATCC 8

molhado 5 / seco 5 (escala 1-5)

resistência à luz

ISO 105-B02

5 (escala 1-8)

AATCC 16.3: 40 hours

5 (escala 1-5)

resistência ao deslizamento das costuras

ISO 13936 - 2

alongamento 3.5 mm / trama 3.5 mm

ASTM D4034

alongamento 26 lbf / trama 26 lbf

resistência à tensão

ASTM D5034

warp 73 lbs / weft 76 lbs

manutenção



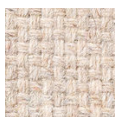


STANDARD
100

S19-3058
Hohenstein HTTI

lamu

7051.01 - 7051.30



7051.01



7051.02



7051.03



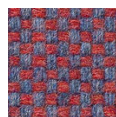
7051.04



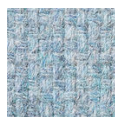
7051.05



7051.06



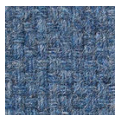
7051.07



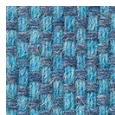
7051.08



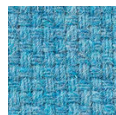
7051.09



7051.10



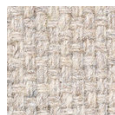
7051.11



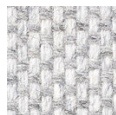
7051.12



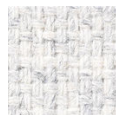
7051.13



7051.14



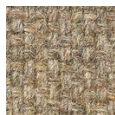
7051.15



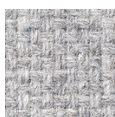
7051.16



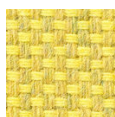
7051.17



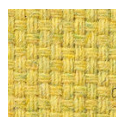
7051.18



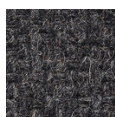
7051.19



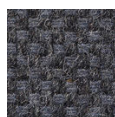
7051.20



7051.21



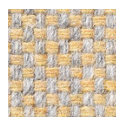
7051.22



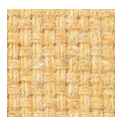
7051.23



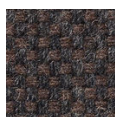
7051.24



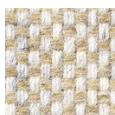
7051.25



7051.26



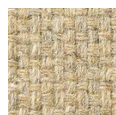
7051.27



7051.28



7051.29



7051.30