

montado

2617.20 - 2617.29



coleção

wallcovering

08

textile

descrição

**estrutura uniforme com efeitos metálicos
subtis**

composição

**60% popa de madeira / 40% poliéster
sobre um suporte em papel**

largura

± 137 cm, ± 54 inches

gramagem

± 394 gr/m², ± 17 oz/yd¹

resistência ao fogo

EN 13501, B s1 d0

ASTM E84, A

resistência à luz

ISO 105-B02, 6 (escala 1 - 8)

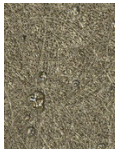


REACTION TO FIRE: EN 13501-1



montado

2617.20 - 2617.29



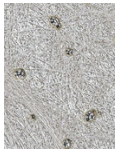
2617.20



2617.21



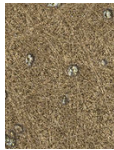
2617.22



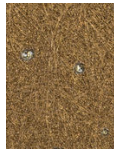
2617.23



2617.24



2617.25



2617.26



2617.27



2617.28



2617.29