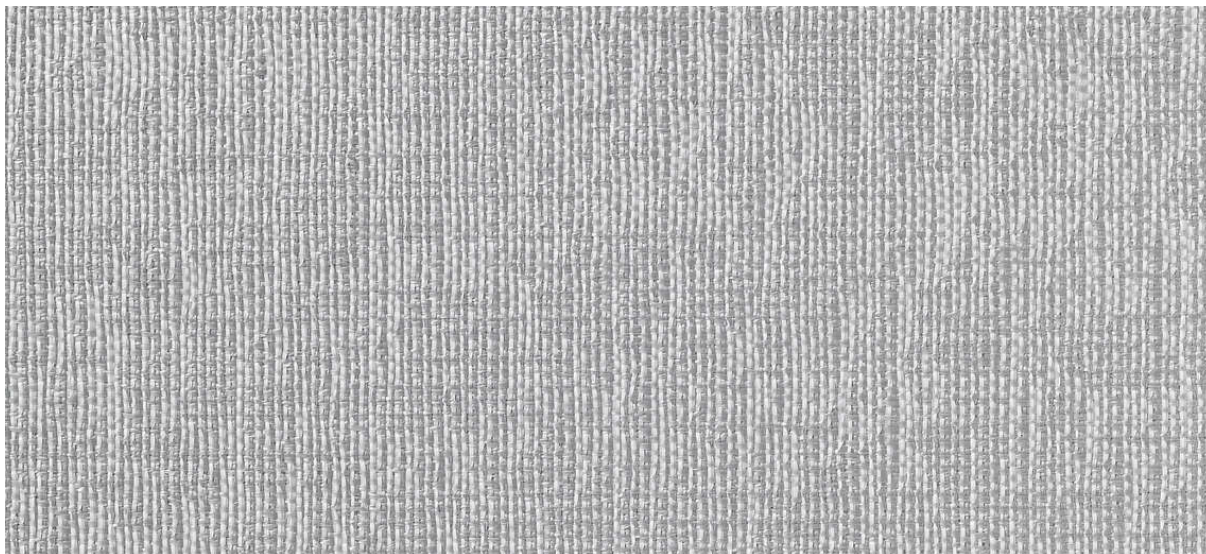


linen

2547.01 - 2547.10



coleção

wallcovering

05

textile

xorel

descrição

estrutura uniforme de linho

composição

**100% ifr xorel® em x-protect wall™
(suporte de papel)**

largura

± 132 cm, ± 52 inches

gramagem

± 388 gr/m², ± 17 oz/yd¹

resistência ao fogo

EN 13501, B s1 d0

ASTM E84, A

informações complementares

cradle to cradle silver certified



REACTION TO FIRE: EN 13501-1



**Xorel is a registered trademark and license
to distribute is granted by permission of
Carnegie Fabrics Inc. US**

linen

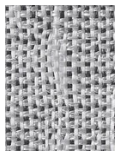
2547.01 - 2547.10



2547.01



2547.02



2547.03



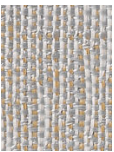
2547.04



2547.05



2547.06



2547.07



2547.08



2547.09



2547.10