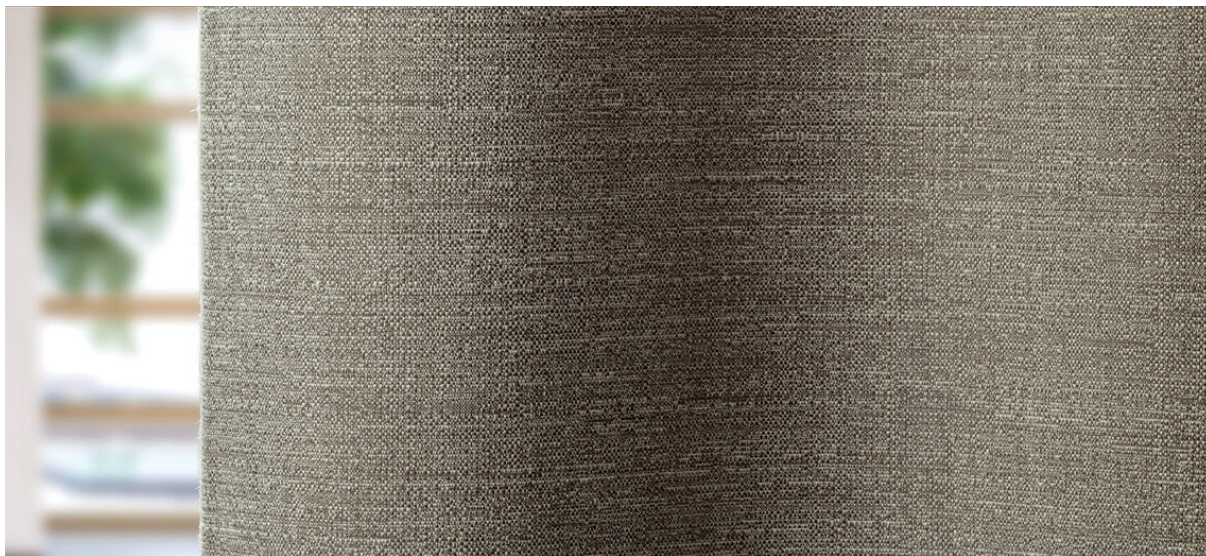


# rona

8080.01 - 8080.09



## 系列

curtain

## 描述

哑光，不规则编织纹理的天然亚麻灵感外观

## 组成

100% 阻燃聚酯纤维

## 宽度

± 301 cm, ± 118 inches

## 重量

± 762 gr/m<sup>2</sup>, ± 25 oz/yd<sup>2</sup> fabrics

## 吸声系数

ISO 354

alphaw 0.75 (pleated)

## 温度及视觉舒适度

EN 410/EN 14501

## 阻燃

EN 13773, class 1

BS 5867-2, type C

NF P 92/503-507, M1

DIN 4102, B1

UNI VF 8456-8457, classe 1

IMO 2010 FTP part 7

NFPA 701

CAN/ULC S109

## 耐擦拭

ISO 105-X12

湿 4-5 / 干 4-5 (由 1-5)

AATCC 8

湿 5 / 干 5 (由 1-5)

## 耐褪色

ISO 105-B02

6 (由 1-8)

AATCC 16,3: 60 hours

4.5 (由 1-5)

## 耐滑缝

ISO 13936-2

warp 3.7 mm / weft 4 mm

ASTM D434

warp 49 lbs / weft 55 lbs



收缩□ : 纵向收缩比: -2.1% / 横向收缩比: -1.8%



STANDARD  
100  
S07-0023  
Hohenstein HTTI



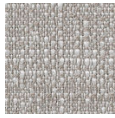
# rona

8080.01 - 8080.09

---



8080.01



8080.02



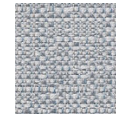
8080.03



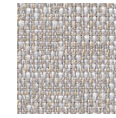
8080.04



8080.05



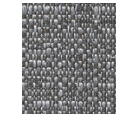
8080.06



8080.07



8080.08



8080.09