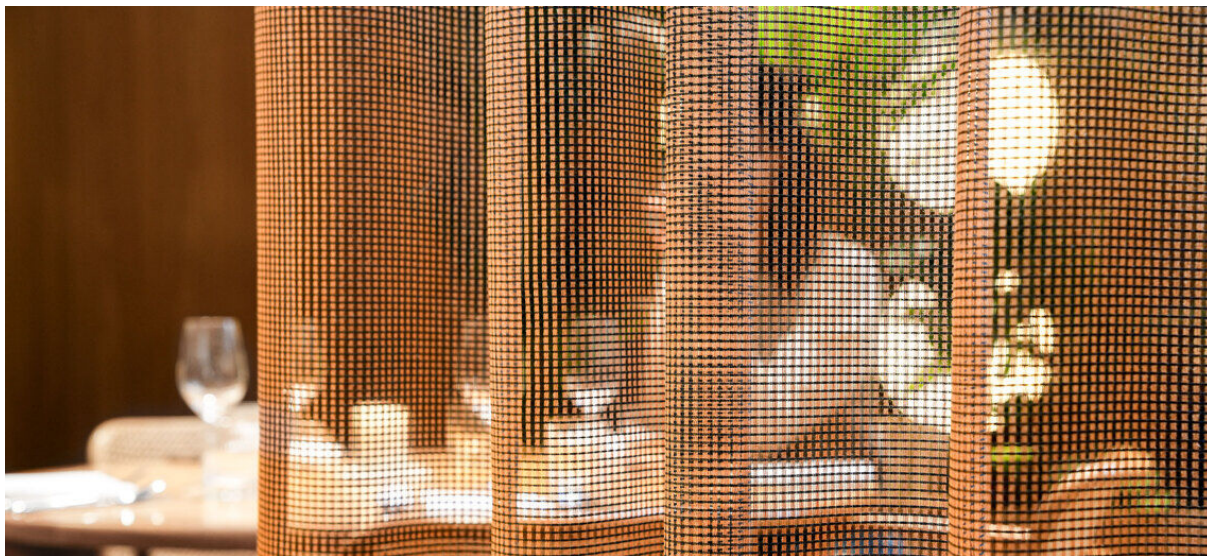


teon

8085.01 - 8085.12



系列

curtain

描述

粗犷开放网格结构的柔软双色调窗帘织物

组成

100% polyester FR

宽度

± 306 cm, ± 121 inches

重量

± 214 gr/m², ± 7 oz/yd² fabrics

温度及视觉舒适度

EN 410/EN 14501

阻燃

EN 13773, class 1

BS 5867—2, type C

NF P 92 / 503 — 507, M1

DIN 4102, B1

UNI VF 8456—8457, classe 1

IMO 2010 FTP part 7

NFPA 701

CAN/ULC S109

耐擦拭

ISO 105—X12

湿 5 / 干 5 (由 1—8)

AATCC 8

湿 4.5 / 干 4.5 (由 1-5)

耐褪色

ISO 105—B02

6 (由 1-8)

AATCC 16.3: 60 hours

4.5 (由 1-5)



收缩□：纵向收缩比 -2.6% / 横向收缩比 -1%



STANDARD
100

S10-0100
Hohenstein HTTI



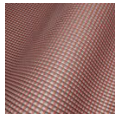
Technische Universität
Dresden

teon

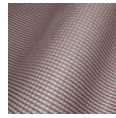
8085.01 - 8085.12



8085.01



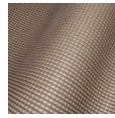
8085.02



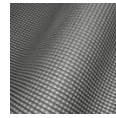
8085.03



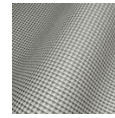
8085.04



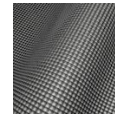
8085.05



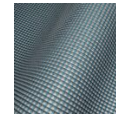
8085.06



8085.07



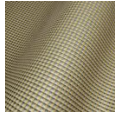
8085.08



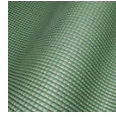
8085.09



8085.10



8085.11



8085.12