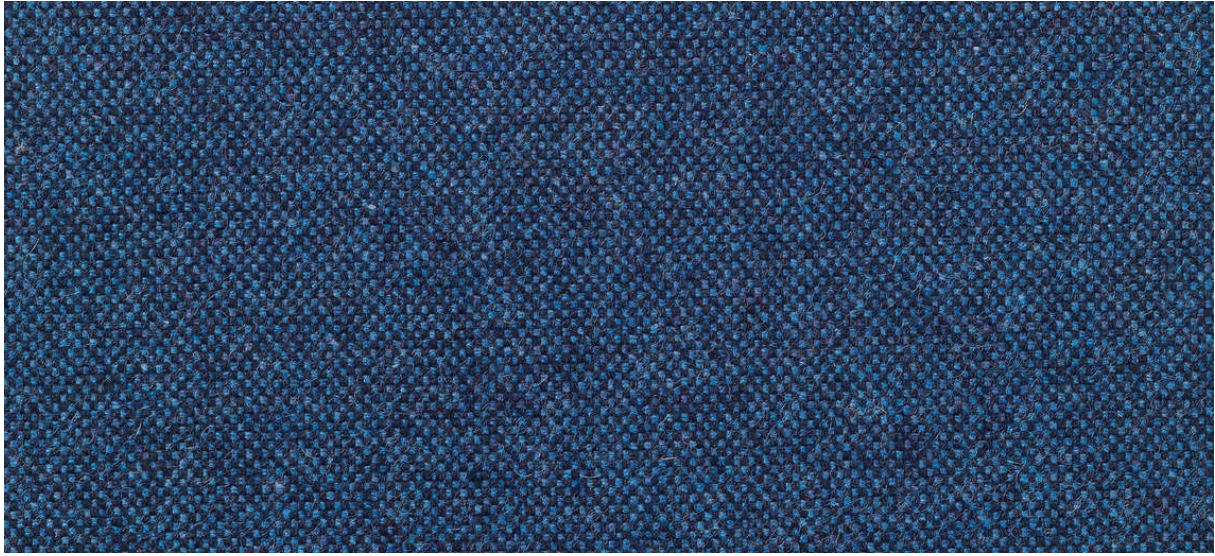


wolin

7050.01 - 7050.47



系列

upholstery
textile

描述

手感细腻的羊毛面料，配有多种纯色和混合色彩

组成

75% post-consumer recycled wool / 20% polyester
/ 5% polyamide

宽度

± 150 cm, ± 59 inches

重量

± 638 gr/m², ± 21 oz/yd² fabrics

阻燃

EN 1021/1-2
BS 5852, crib 5
NF P 92/503-507, M2
DIN 4102, B2
IMO 2010 FTP part 8
UNI 9175, classe 1 IM
Cal TB 117
NFPA 260, class 1

耐磨性

ISO 12947-2
>100,000 rubs martindale
ASTM D4157
100,000 double rubs wyzenbeek

起毛

ISO 12945-2
3-4 (由 1-5)
ASTM D3511
4 (由 1-5)

耐擦拭

ISO 105-X12
湿 4-5 / 干 4-5 (由 1-5)
AATCC 8
湿 4-5 / 干 5 (由 1-5)

耐褪色

ISO 105-B02
6 (由 1-8)
AATCC 16.3: 40 hours
4 (由 1-5)

耐滑缝

ISO 13936 - 2
纵向收缩比 3 mm / 横向收缩比 3.4 mm
ASTM D4034
纵向收缩比 82 lbf / 横向收缩比 81 lbf

屈伸强度

ASTM D5034
warp 123 lbs / weft 109 lbs



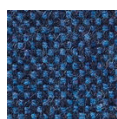


STANDARD
100

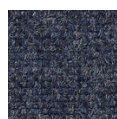
S19-3058
Hohenstein HTTI

wolin

7050.01 - 7050.47



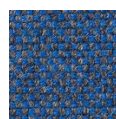
7050.01



7050.02



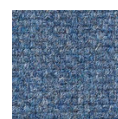
7050.03



7050.04



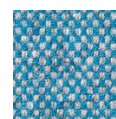
7050.05



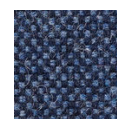
7050.06



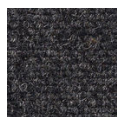
7050.07



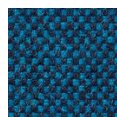
7050.08



7050.09



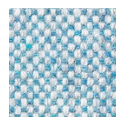
7050.10



7050.11



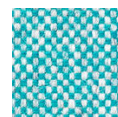
7050.12



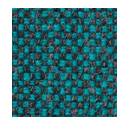
7050.13



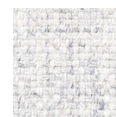
7050.14



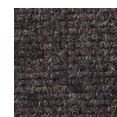
7050.15



7050.16



7050.17



7050.18



7050.19



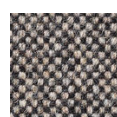
7050.20



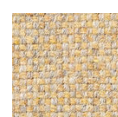
7050.21



7050.22



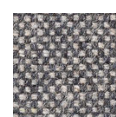
7050.23



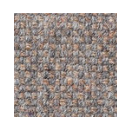
7050.24



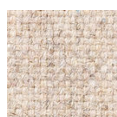
7050.25



7050.26



7050.27



7050.28



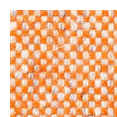
7050.29



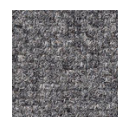
7050.30



7050.31



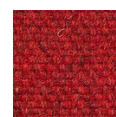
7050.32



7050.33



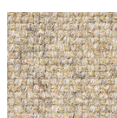
7050.34



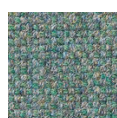
7050.35



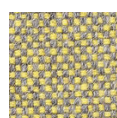
7050.36



7050.37



7050.38



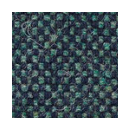
7050.39



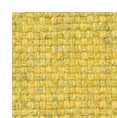
7050.40



7050.41



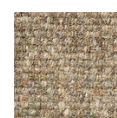
7050.42



7050.43



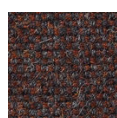
7050.44



7050.45



7050.46



7050.47